

10

20

30

40

50

60

GEOSERVICES LOGGED THE WELL FROM 34M

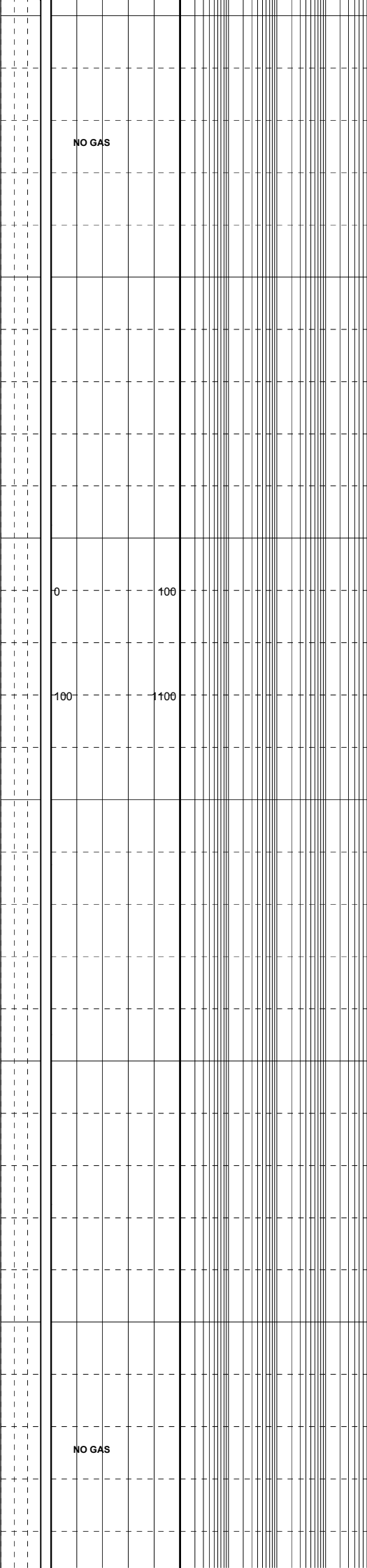
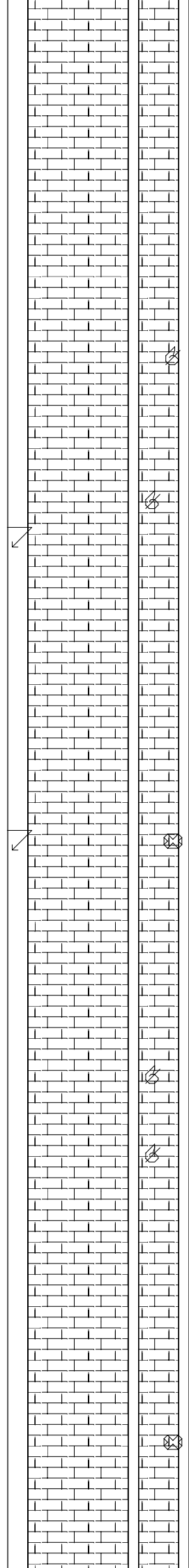
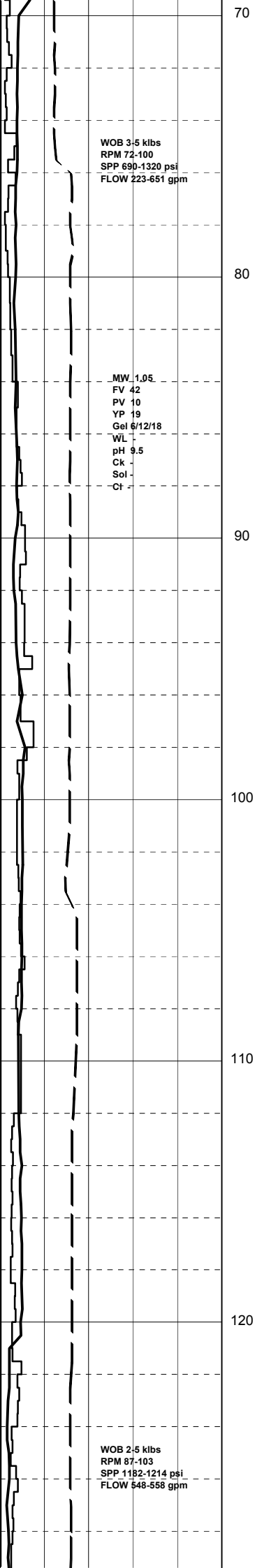
CHILDERS COVE #1 SPUDED
ON 19-09-05 @ 18:00HRS

BIT #1 VAREL CH1GMS
SIZE: 12.25" JETS: 3x16
IN: 16m OUT:551m
RUN: 535m HRS:11.3h
COND:

LIMESTONE:off wh,yelsh gry,pl brn
i/p,spar,abdt shell & coral frags,
xin,uncons,fri-mod hd.

NO GAS

LIMESTONE:off wh,yelsh gry,pl brn
i/p,mnr dk yelsh org,spar,abdt
shell & coral frags,xin,uncons,fri-
mod hd.



LIMESTONE:off wh,yelsh gry,pl brn,pl olv,
i/p,mnr dk yelsh org,spar,abdt
shell & coral frags,xln,uncons,fri-
mod hd.

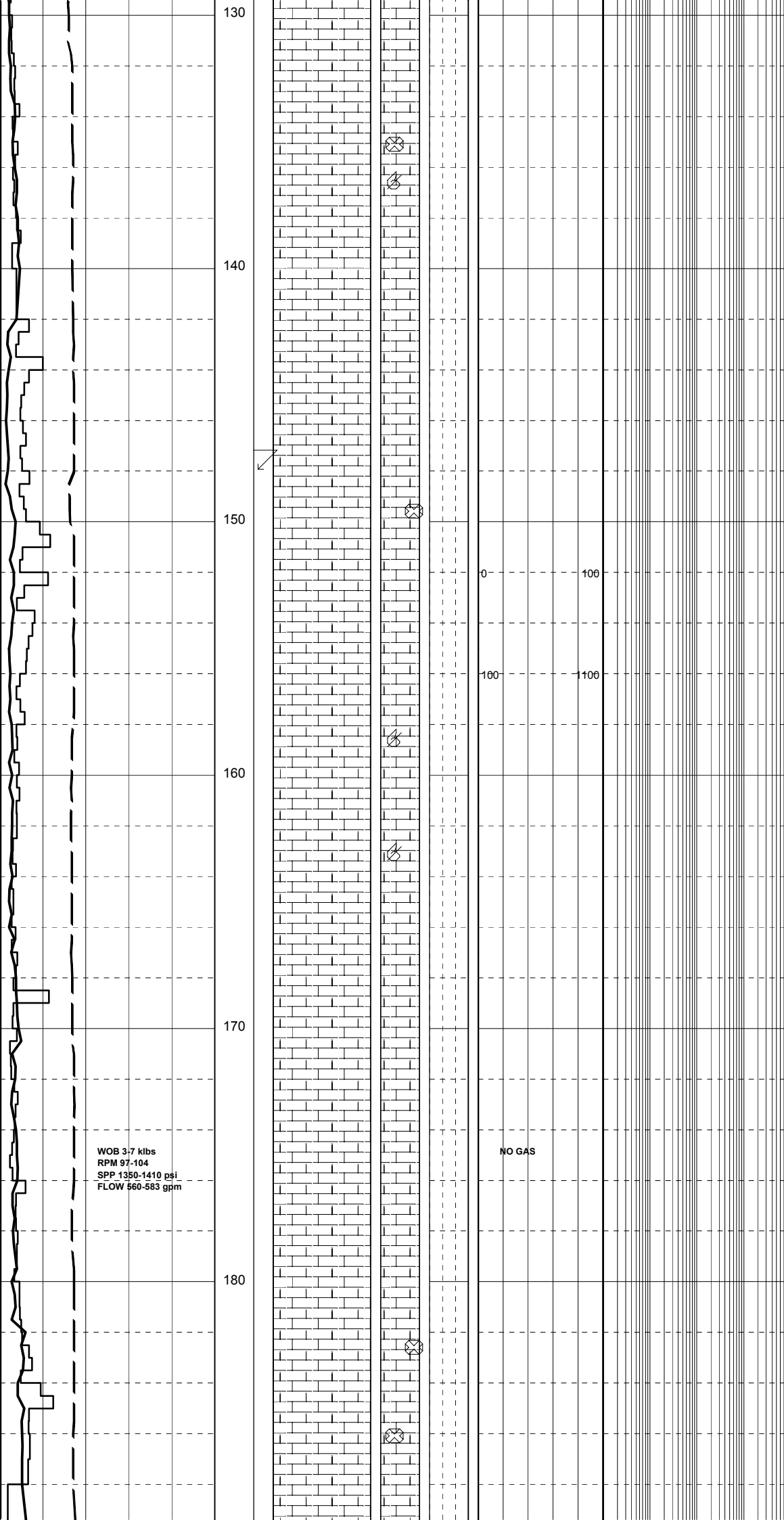
LIMESTONE:off wh,yelsh gry,pl olv,
mnr med lt gry,spar,micr i/p,shell &
coral frags,xln,uncons,fri-mod hd.

SURVEY @ 90.4m: 0.00°

LIMESTONE:yelsh gry,lt olv gry,mnr
off wh,spar,micr l/p,com shell &
coral frags,tr-rr grn liths,xln,uncons
fri-mod hd.

SURVEY @ 102m: 0.00°

LIMESTONE:lt olv gry,grnsh gry-
off wh,spar,tr micr,foss,abdt shell
& coral frags,mnr-com grn liths,xln,
fri-mod hd,uncons i/p.



LIMESTONE:wh-off wh,yelsh gry,lt
 olv gry,spar,micr i/p,com shell &
 coral frags,mnr grn liths,tr blk
 lith spks,xln,fri-dom mod hd,
 unconcs i/p.

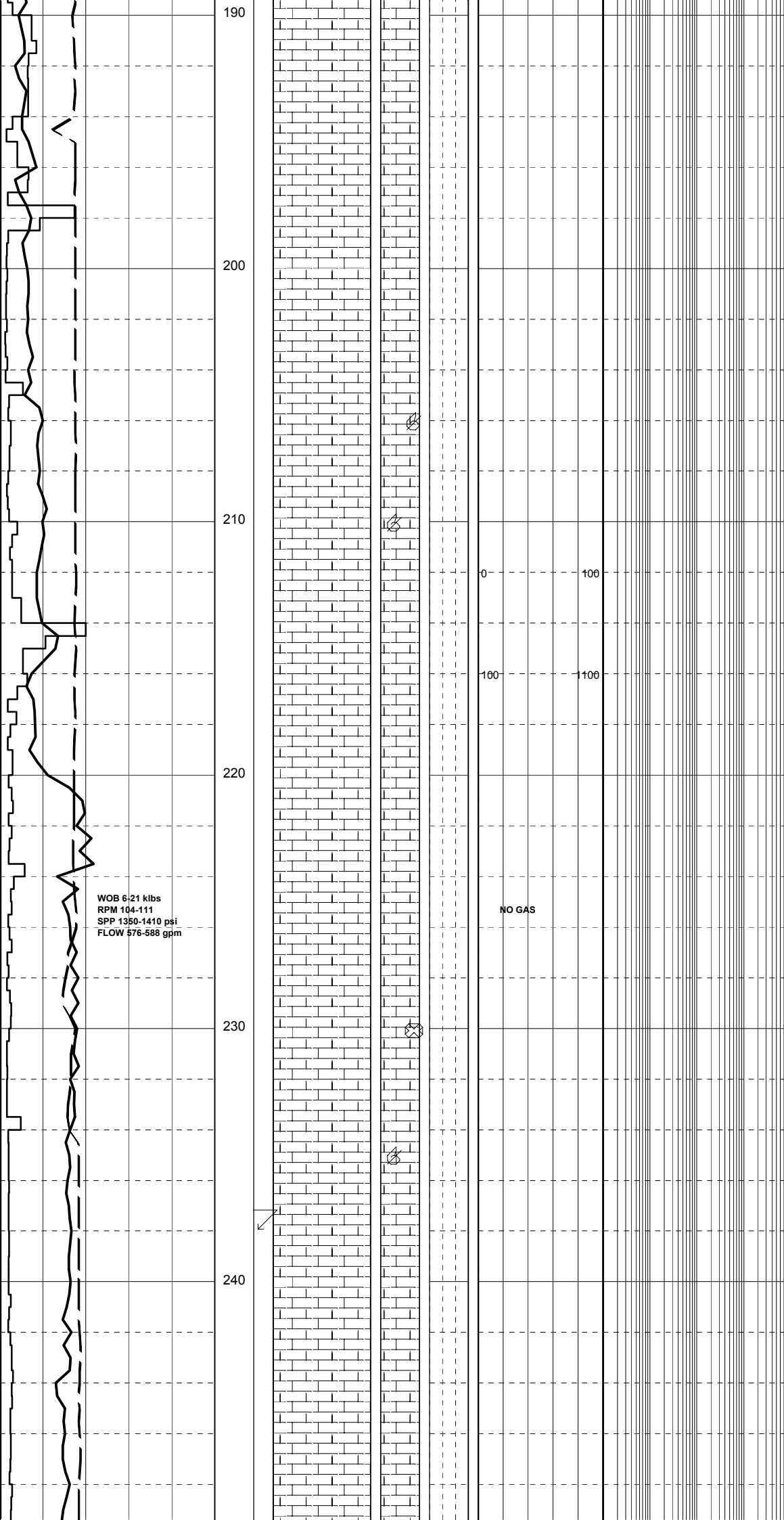
SURVEY @ 148.0m: 0.00°

LIMESTONE:off wh,yelsh gry,lt
 olv gry,tr dk grnsh gry,spar,com
 loc micr,tr arg,tr MARL frags,com
 foss frags,tr grn & blk liths,xln,
 dom mod hd-hd,fri i/p.

LIMESTONE:wh-off wh,grnsh-gry,tr
 yelsh gry,spar,com micr,tr arg,tr
 MARL,mnr-com foss mat,grn & blk
 liths,xln,mod hd-hd,fri i/p.

WOB 3-7 klbs
 RPM 97-104
 SPP 1350-1410 psi
 FLOW 560-583 gpm

NO GAS



LIMESTONE: off wh, lt olv gry, grnsh
 gry, spar, com loc micr, tr MARL, com
 foss mat, xln, fri-mod hd.

LIMESTONE: off wh-lt olv gry, grnsh
 gry, spar, com loc micr, tr MARL, com
 foss mat, tr grn & blk liths, xln, fri-
 mod hd.

LIMESTONE: off wh-lt olv gry, grnsh
 gry, spar, com loc micr, tr MARL, com
 foss mat, tr grn & blk liths, xln, fri-
 mod hd.

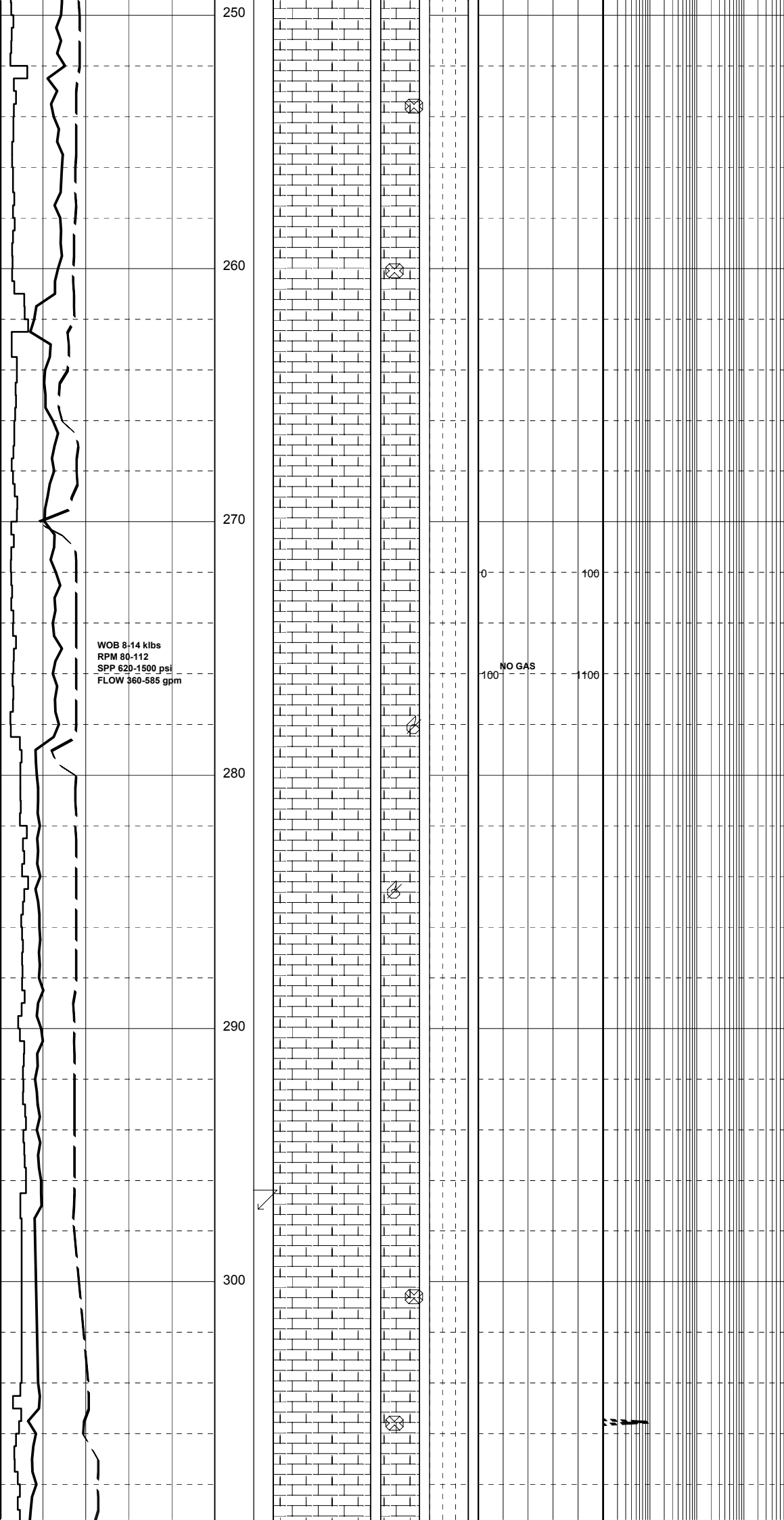
SURVEY @ 238.0m: 0.00°

LIMESTONE: off wh-lt olv gry, grnsh
 gry, spar, com loc micr, tr MARL, com
 foss mat, tr grn & blk liths, xln, fri-
 mod hd.

WOB 6:21 klbs
 RPM 104-111
 SPP 1350-1410 psi
 FLOW 576-588 gpm

NO GAS





LIMESTONE:lt gry,lt olv gry,med grnsh gry,arg,loc com shell & coral frags,mnr dk spks,v sft-sft,blky,dom amorph.

LIMESTONE:lt gry,lt olv gry,med grnsh gry,arg,loc com shell & coral frags,mnr dk spks,v sft-sft,dom amorph.

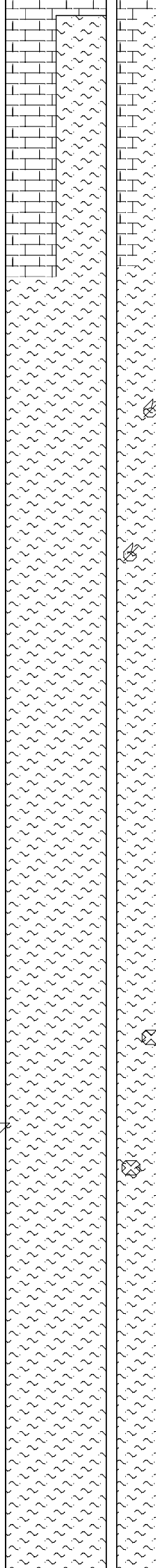
LIMESTONE:lt gry,lt olv gry,med grnsh gry,arg,loc com shell & coral frags,mnr dk spks,v sft-sft,dom amorph.

LIMESTONE:lt gry,lt olv gry,med grnsh gry,arg,loc com shell & coral frags,mnr dk spks,v sft-sft,dom amorph.

MW 1.05
FV 42
PV 8
YP 18
Gel 10/24/38
WL
pH 8.5
Cr 7
Sol -2
Cl -2.5

WOB 8-14 klbs
RPM 107-130
SPP 1450-1500 psi
FLOW 530-570 gpm

310
320
330
340
350
360



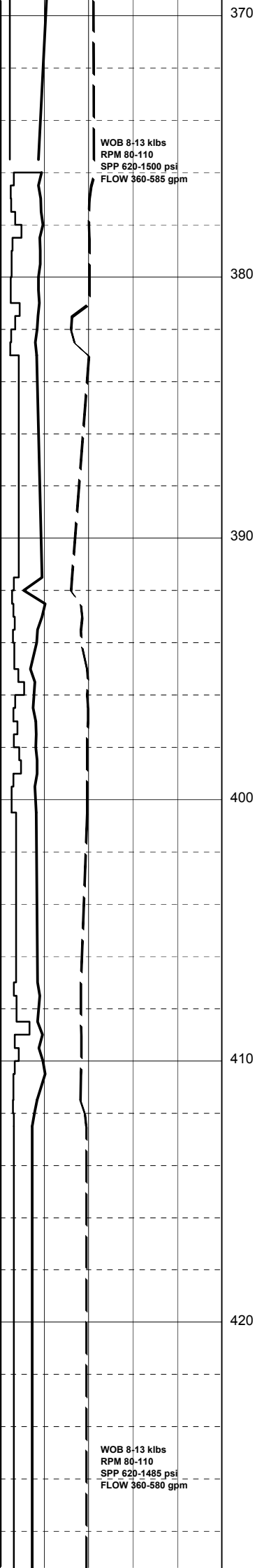
NO GAS

MARL: med gry, grnsh gry, arg, occ spar LMST frags, occ foss mat, v sft-sft, sbbly-amorph.

MARL: med gry, grnsh gry, arg, occ spar LMST frags, occ foss mat, v sft-sft, sbbly-amorph.

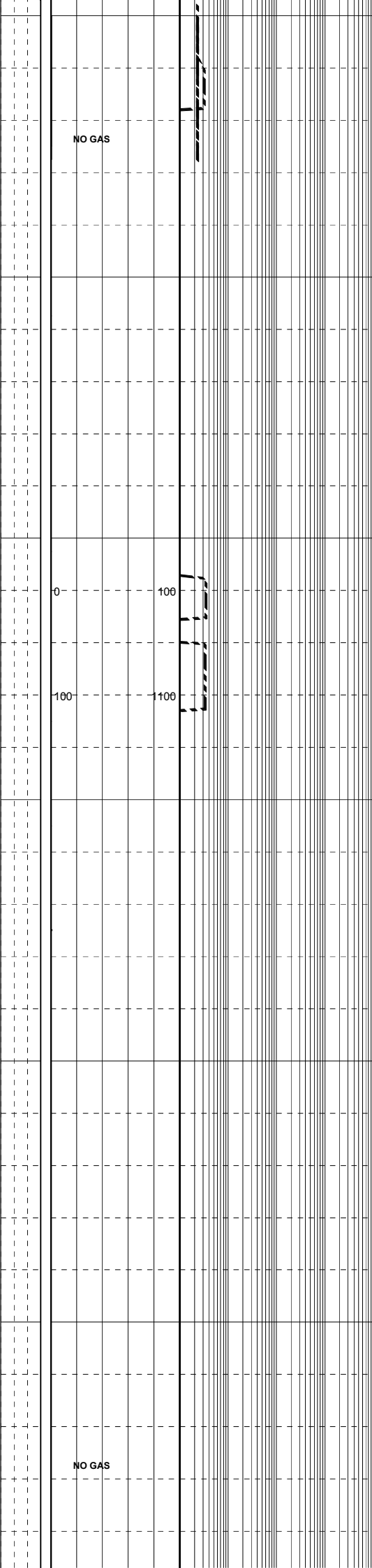
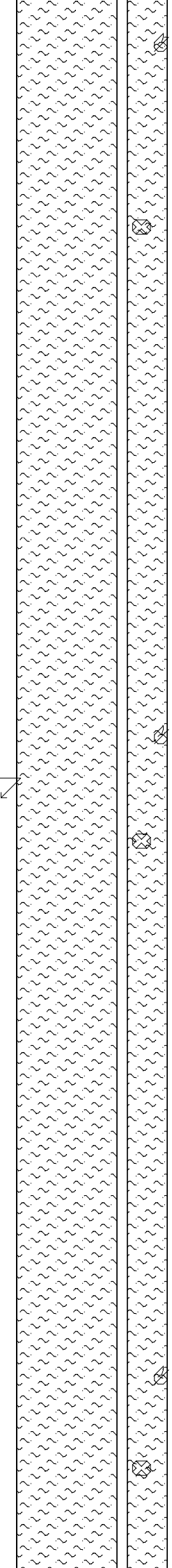
MARL: lt gry, lt olv gry, med grnsh gry, arg, spar LMST frags, occ foss mat, v sft-sft, sli frm, sbbly-amorph.

SURVEY @ 353.0m: 0.00°



WOB 8-13 klbs
RPM 80-110
SPP 620-1500 psi
FLOW 360-585 gpm

WOB 8-13 klbs
RPM 80-110
SPP 620-1485 psi
FLOW 360-580 gpm



NO GAS

0 100
100 100

NO GAS

MARL:lt gry,lt olv gry,med gmsh gry,
arg,spar LMST frags,occ foss mat,v sft-
sft,sli frm,sbbiky-amorph.

MARL:lt gry,lt olv gry,med gmsh gry,
arg,spar LMST frags,occ foss mat,v sft-
sft,sli frm,sbbiky-amorph.

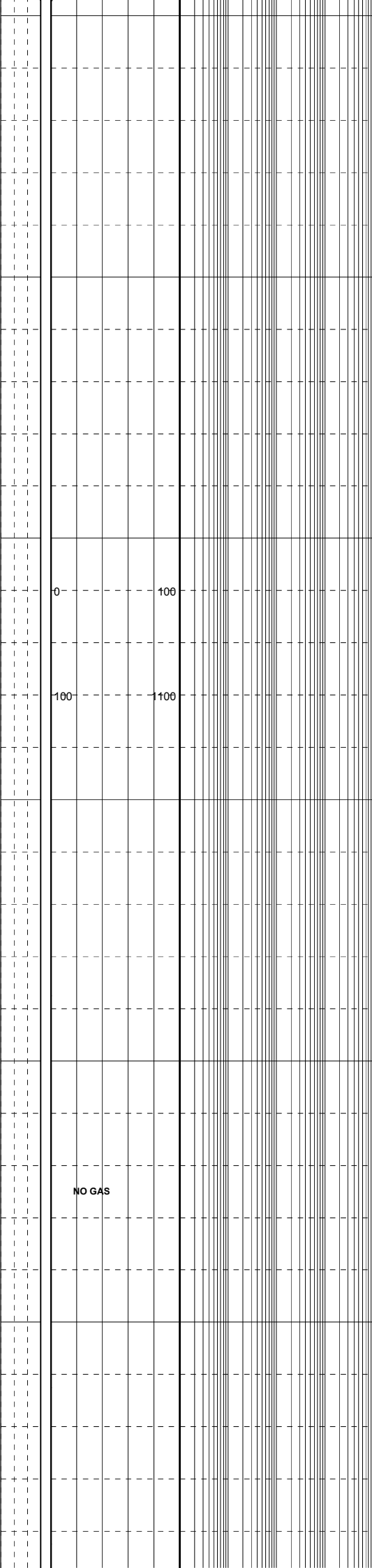
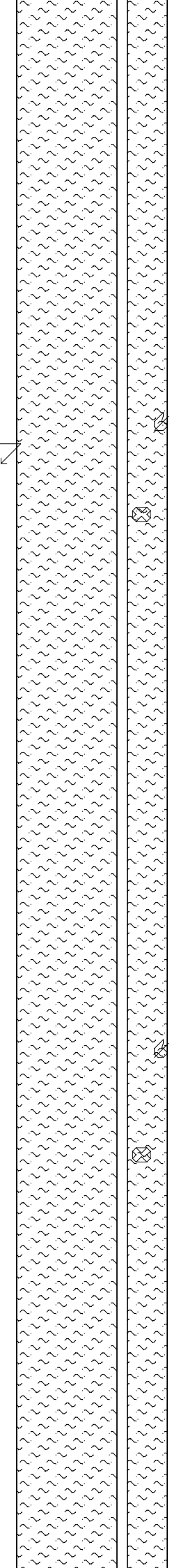
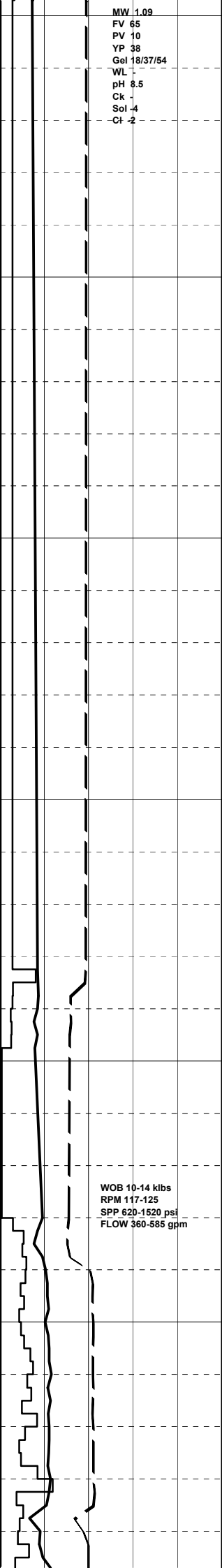
SURVEY @ 400.0m: 0.00°

MARL:med dk gry,dk gmsh gry,occ med-lt
gry,arg,occ shell frags,tr coral frags,
v sft-sft, sbbiky-sbfiss

MARL:med dk gry,dk gmsh gry,occ med-lt
gry,arg,occ shell frags,tr coral frags,
v sft-sft, sbbiky-sbfiss

MW 1.09
FV 65
PV 10
YP 38
Gel 18/37/54
WL 1
pH 8.5
Ck -
Sol -4
Cl -2

430
440
450
460
470
480

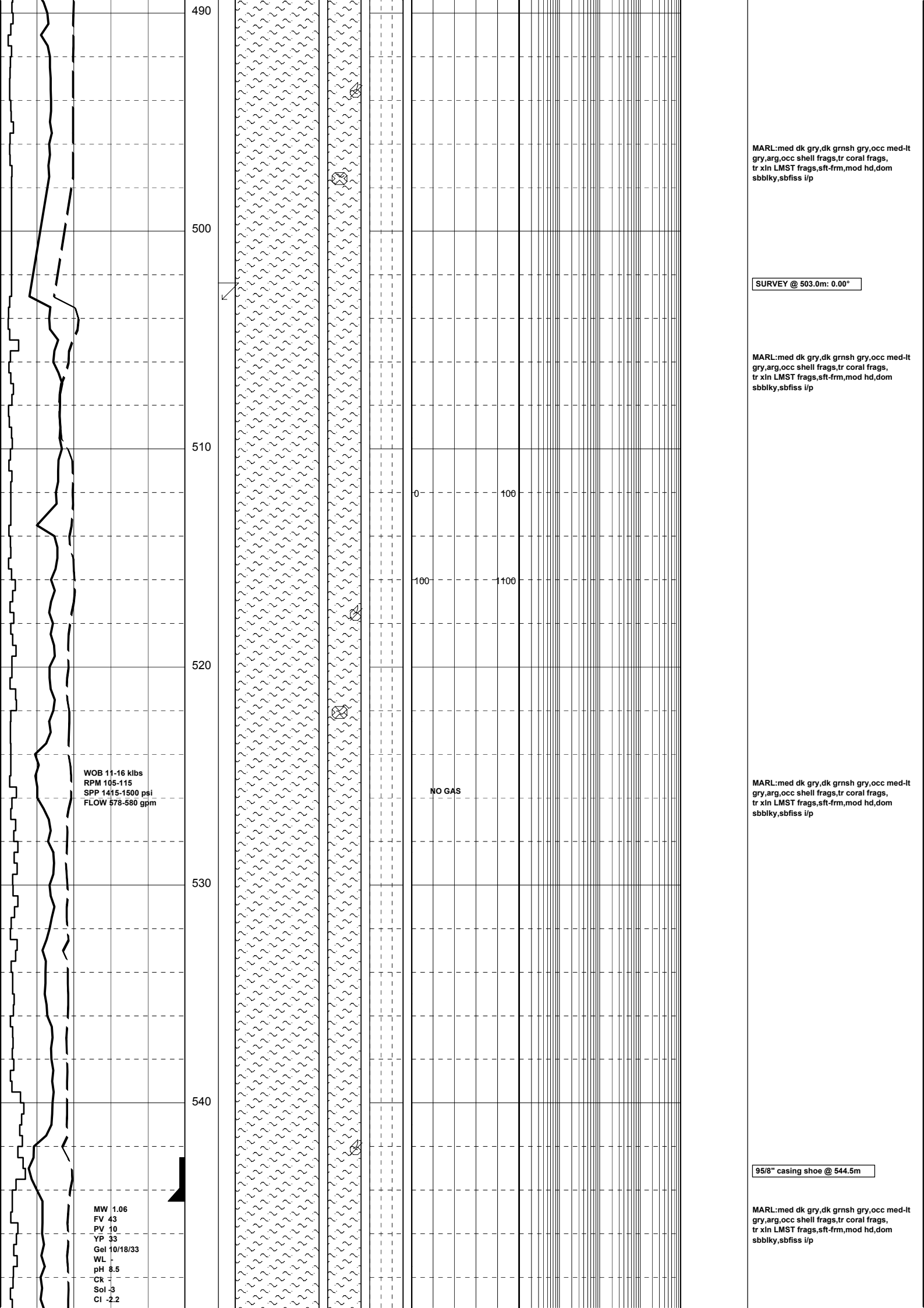


MARL: med dk gry, dk grnsh gry, occ med-lt gry, arg, occ shell frags, tr coral frags, v sft-sft, sbblky-sbfiss

SURVEY @ 447.0m: 0.00°

MARL: med dk gry, dk grnsh gry, occ med-lt gry, arg, occ shell frags, tr coral frags, v sft-sft, sbblky-sbfiss

MARL: med dk gry, dk grnsh gry, occ med-lt gry, arg, occ shell frags, tr coral frags, v sft-sft, sbblky-sbfiss



MARL: med dk gry, dk grnsh gry, occ med-ht gry, arg, occ shell frags, tr coral frags, tr xln LMST frags, sft frm, mod hd, dom sbbiky, sbfiss i/p

SURVEY @ 503.0m: 0.00°

MARL: med dk gry, dk grnsh gry, occ med-ht gry, arg, occ shell frags, tr coral frags, tr xln LMST frags, sft frm, mod hd, dom sbbiky, sbfiss i/p

0 100
100 100

NO GAS

MARL: med dk gry, dk grnsh gry, occ med-ht gry, arg, occ shell frags, tr coral frags, tr xln LMST frags, sft frm, mod hd, dom sbbiky, sbfiss i/p

95/8" casing shoe @ 544.5m

MARL: med dk gry, dk grnsh gry, occ med-ht gry, arg, occ shell frags, tr coral frags, tr xln LMST frags, sft frm, mod hd, dom sbbiky, sbfiss i/p

WOB 11-16 klbs
RPM 105-115
SPP 1415-1500 psi
FLOW 578-580 gpm

MW 1.06
FV 43
PV 10
YP 33
Gel 10/18/33
WL -
pH 8.5
CR -
Sol -3
Cl -2.2



